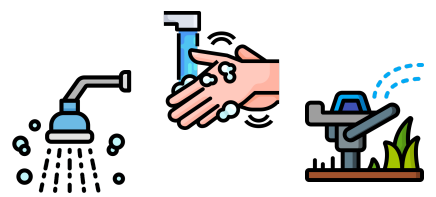
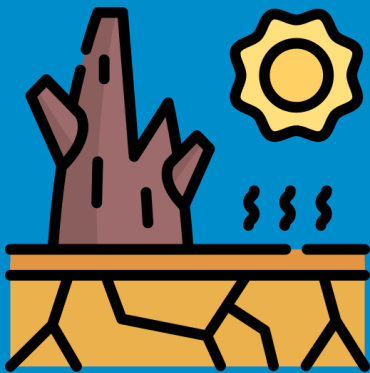


HOW YOU CAN HELP CONSERVE WATER WHILE AT HOME

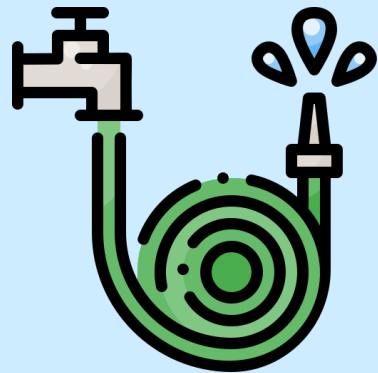
Bagué+
GROUP



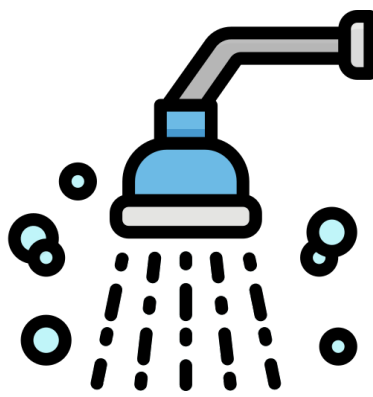
Plant drought tolerant Florida native trees and shrubs.



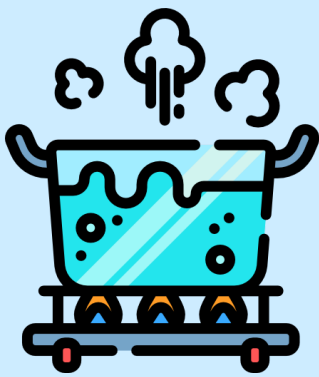
Add an automatic shut off nozzles to you watering hose.



Limit your shower to less than 5 minutes, better yet switch to a low-flow shower head.



Do not throw away that pasta water, save it to water your plants.



Turn off the water while brushing your teeth or washing your hands.



Take advantage of Miami-Dade County's Water Conservation Rebates for residents.



Wash full loads of laundry only in the washer, same goes for your dish washer.



Water your plants of your lawn during cool parts of the day to help with evaporation.

